

Beauty from the Sea®

REPÊCHAGE®



FOUR LAYER FACIAL®

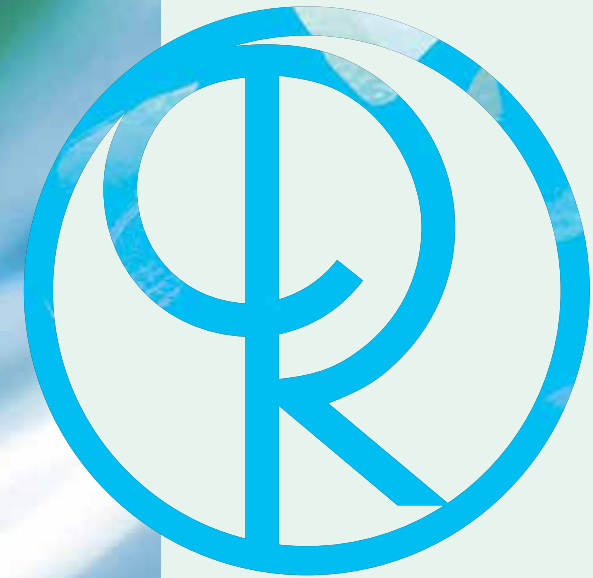


"The best facial of the century"
— Cosmopolitan, UK

www.repechage.com

Pioneers in Seaweed Based Products. Since 1980. Made in the USA.

www.repechage.com / www.beautyfromthesea.com / pro.repechage.com / www.learningwithlydia.com



REPÊCHAGE®
Beauty from the Sea®

2019
PRICE LIST

*Skincare
Bodycare
Cosmetics*

Made in the USA.

Sarkli-Repêchage, Ltd.
300 Castle Road, Secaucus, NJ 07094 U.S.A.
Tel: 201.549.4200, 800.248.SKIN (7546),
Fax: 201.549.4240
www.repechage.com
pro.repechage.com





Award-Winning Professional and Retail Skin Care

Our mission statement is

Seeking solutions to skin care problems that we witness globally. Sarkli- Repêchage® is committed to developing and manufacturing high-quality seaweed-based skincare products and treatments designed to enhance the appearance of the skin. In addition, we are dedicated to providing the ongoing education in the methods, developed by Lydia Sarfati. Our Research and Development team is constantly searching for the latest in skin care technology. We work with the foremost doctors, plastic surgeons and dermatologists to test our products on real patients. We make sure that we are delivering the very best so that your clients see and feel the visible results.

1. Commitment to Professional Esthetics

Repêchage® is only available through professional skin care centers, spas, medical centers and salons, where qualified estheticians and beauty professionals are available.

2. Commitment to Education

Repêchage® is committed to education. Our instructors are all experienced, qualified and trained in the Lydia Sarfati method. Our educational programs extend to weekly classes at the Lydia Sarfati Post Graduate Academy in New Jersey, instructional videos, trade show classes and congresses worldwide.

We have training programs throughout over 45 countries worldwide as well as our distribution and training center in UK. For further information please visit our professional website www.repechage.com.

3. Commitment to Salon Success

Repêchage® has one of the strongest salon support systems available in the beauty industry. Marketing through Point-of-Sales, Gift with Purchases, posters, brochures, postcards, product catalogues and on-going public relations help to drive consumers to your spa, making Repêchage® the best retail and spa line.

4. Commitment to a Worldwide Presence

Repêchage® is made proudly in the United State of America with the finest ingredients from around the world. Repêchage® is a global experience. We are presently in over 45 countries worldwide. Our corporate headquarters and manufacturing facility is located in Secaucus NJ, right outside NYC.

Beauty from the Sea®

Manufactured in the USA

NOW AVAILABLE IN OVER 45 COUNTRIES



With Repêchage®, you will experience the highest quality professional skin care products in the world. Repêchage® skin care products are manufactured in our ISO 9001-15 certified facility and GMP certified. Most importantly, the Repêchage® brand is loved and respected by estheticians, beauty therapists and massage professionals globally.

The Repêchage® Difference



Lydia Sarfati
CEO/Founder/Esthetician/Author

In the 1970's Lydia Sarfati, CEO and Founder of Sarkli-Repêchage, Ltd., discovered the renewing powers of sea water and seaweed.

Based on her research, Sarfati founded Repêchage® Skin Care in 1980, pioneering the use of, sustainably-harvested Seaweed to benefit skin all around the world. Through her research, Sarfati found that seaweed contained a high concentration of powerful ingredients, including 12 vitamins and minerals, 42 trace elements, and 18 amino acids to help skin look hydrated, restored, renewed

and radiant. Repêchage® continues to develop products based on the seaweeds harvested off the Brittany Coast of France and the coast of Maine USA.

Repêchage® now has over 20 seaweed-based skin care regimens for every skin type and concern and over 100 products for the professional and consumer. For the professional, Repêchage® now has over 40 skin treatments for the spa and salon, including the Repêchage® Four-Layer Facial®, the company's signature treatment. Designed by Lydia Sarfati, this spa treatment is the world's most luxurious facial, proclaimed

The best of the best worldwide, by *Harpers & Queen Magazine*, and The most fabulous facial of the century, by *Cosmopolitan Magazine UK*. Repêchage® is available at luxury spas and destination resorts, professional skin care centers and medical centers as well as through repechage.com. Dedicated to advanced knowledge, Sarfati offers a continuous schedule of classes in Repêchage® brand training and sales techniques at the Lydia Sarfati Post Graduate SkinCare Academy, trade shows and events through-out the world. Join us for our monthly webinars to gain further insights and education at: www.learningwithlydia.com.

*It's your skin.
Don't compromise it.*

CuisanArt Resort & Spa, Anguilla



Our Seaweeds



Laminaria Digitata

Brown seaweed found in the upper intertidal and shallow subtidal marine environments.



Ascophyllum Nodosum

Brown seaweed found in the upper intertidal and shallow subtidal marine environments in the North Atlantic Ocean.



Ulva Lactuca

A green seaweed found in the upper intertidal and shallow subtidal marine environments.



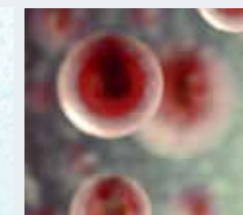
Ahnfeltia Plicata

(formerly known as Ahnfeltia Concinna)
Red marine seaweed that thrives in the deepest levels of the ocean. Grows between 10 to 40cm. Found in the Hawaiian Islands



Codium Fragile

A green seaweed anchored to rocks from 1 cm to many meters in size in the intertidal to shallow subtidal marine environments.



Porphyridium Red unicellular micro-algae

Has no cell wall but protects itself by secretion of Mucopolysaccharides. Protects against pathogenic micro-organisms.



Ulva Compressa

(formerly known as Enteromorpha Compressa)
Green sheet and tubular seaweed.



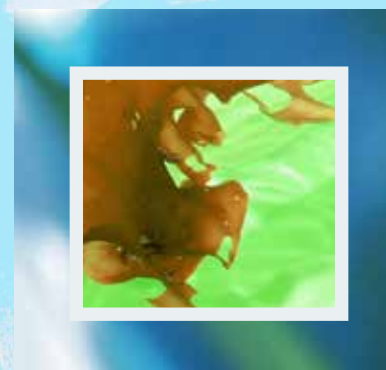
Pelvetia Canaliculata

Brown algae found on the rocks of the upper intertidal of rocky shores in the Eastern Atlantic Ocean.



Chondrus Crispus

Also known as Irish Moss and carrageenan. Shrub-like densely-branched with short forked tips. Can be red to purple, brown to black but bleaches to beige or ivory in the sun. Found in subtidal zones on submerged portions of rock.



Saccharina Latissima

A Yellow Brown Seaweed found in the shallow subtidal cold water environments in the Atlantic and Pacific Oceans.



Spirulina

Cyanobacteria also known as a type of blue-green algae which are free floating and form mats in aquatic environments. These have very high protein content and leading source of natural carotene, Vitamin E and Zinc, Essential Amino Acids.



Award-Winning Skin Care

Unidose Professional Facials

- Safe, Sanitary, Consistent
- Cost-Controlled Treatments
- Perfect Results Each and Every Time

“REPÊCHAGE DELIVERS WHAT THEY PROMISE – HIGH QUALITY PRODUCTS, REVOLUTIONARY AND PROGRESSIVE TREATMENTS, AND THE BEST ON-GOING EDUCATION IN THE WORLD!”

– Lester E. Crowell Jr., Managing Partner Three-13 Salon, Spa, & Boutique

pro.repechage.com
www.repechage.com
www.beautyfromthesea.com
www.learningwithlydia.com





SKIN REJUVENATION

Repêchage® Four-Layer Facial® (SU1) for Dry Skin & (SU2) for Oily/Combination Skin
Our premier facial treatment. Experience layer upon layer of pure, fresh European and American seaweed to help tone, deep cleanse and firm the appearance of the skin dramatically. Enjoy a cool seaweed mask, followed by a mineral-rich thermal mask that allows for total relaxation and wow results. Every step of the facial is a uni-dose preparation. 4 Facials **\$83.50**



EVEN SKIN TONE

Biolight® Express Brightening Facial (SU75) for Dull, Uneven Skin
This express treatment uses the Repêchage® Biolight® Brightening Sheet Mask to help create a luminous, flawless-looking complexion anytime. Developed by Repêchage® Founder and CEO Lydia Sarfati, this express, 30 minute treatment combines the latest in sheet mask biotechnology. The Repêchage® Biolight® Express Brightening Facial will help sallow, dull skin with accumulated dead skin cells look rejuvenated, glowing and restored while helping to control the appearance of uneven tone. Great to use in conjunction with the Repêchage® Biolight® Luminex Mask. This new facial can also be used as a supplement to the monthly Repêchage® Biolight® Miracle Facial with Glyco-Sea® Glycolic Peel when skin needs to look bright and luminous fast. 5 Facials **\$89.00**



DEEP HYDRATION
Seaweed Treatment (SU3) For All Skin Types

The "Seaweed Facial on the Go" is the express ticket to a clean and glowing complexion. A soothing massage with our multivitamin C-Serum® is followed by a freshly mixed seaweed mask. This cooling and soothing treatment helps hydrate while improving the appearance of skin tone and clarity. Perfect as a stand-alone treatment or in conjunction with exfoliating treatments. Every step of the facial is a uni-dose preparation. 6 Facials **\$62.00**



ANTI-AGING
Vita Cura® 5 Phase Firming Facial (VC5) For Mature Skin

The Vita Cura® 5 Phase Firming Facial is specifically designed to help invigorate, and tone the appearance of mature skin. An Enzymatic Micropeel helps uncover a more even-toned complexion. Two massages and a cool Spirulina Seaweed Mask with Pentapeptide help to make skin appear firmer and smoother. Every step of the facial is a uni-dose preparation. 5 Facials **\$105.00**



EVEN SKIN TONE
Biolight® Miracle Facial with Glyco-Sea® Glycolic Peel (BI01)

The Repêchage® Biolight® Miracle Facial with Glyco-Sea® Peel is based on a multi-dimensional approach to brighten and even the appearance of the skin. With brightening ingredients and innovative marine bio-technology, Repêchage® Biolight® Miracle Facial helps reduce the appearance of dark spots and hyper-pigmentation. Every step of the facial is a uni-dose preparation.
*Sunburn alert: this product contains Alpha Hydroxy Acid (AHA) that may increase your skin's sensitivity to the sun and particularly the possibility of sunburn. Use a sunscreen and limit sun exposure while using this product and for a week afterwards. 5 Facial **\$129.50**

DEEP CLEANSING & EXFOLIATING
Biolight® Luminex Mask (SU74) for All Skin Types

The Repêchage Biolight® Luminex Mask is an entirely new concept in professional facial treatments. Fortified with Glycolic Acid (AHA), Multi-Fruit Complex, Laminaria Digitata Seaweed filtrate and other natural ingredients, this mask helps to reduce the appearance of fine lines while sloughing off dry skin, leaving it bright and glowing. Kaolin clay helps to deep cleanse and reduce excess oils. This luxurious, pearlescent, creamy mask is a 15 minute express facial that can be used alone, or added on to other Repêchage services.
*Sunburn alert: this product contains Alpha Hydroxy Acid (AHA) that may increase your skin's sensitivity to the sun and particularly the possibility of sunburn. Use a sunscreen and limit sun exposure while using this product and for a week afterwards. 12 treatments **\$49.50**



PROBLEM/OILY SKIN
Hydra Medic® Facial with Desincrustation Mask (HMRX) for Oily/Problem Skin

Deep cleanses and helps control the appearance of oily skin, while helping maintain moisture. This deep cleansing and refining treatment feels soothing and leaves skin with a renewed appearance of freshness. Proven results. Used and approved by skin expert and professional licensed estheticians. Provide your clients with a second chance to look their best! 4 Facials **\$79.50**





DRY SKIN
Hydra Dew® Express Lift Moisture Mask (HDX6)
Repêchage® Hydra Dew® Express Lift Moisture Mask helps skin appear more luminescent. Codium Fragile seaweed helps to provide moisturization. Essential Fatty Acids of Sunflower, Sesame and Almonds work to help to moisturize the skin, while Bearberry helps to reduce the appearance of uneven skin tone for a brighter looking complexion. Every step of the facial is a uni-dose preparation.
6 Facials **\$78.50**



CALMING and SOOTHING
Red-Out® Facial with Seaweed Extract and Silver (HRO) For Sensitive Skin
Repêchage® Red-Out® Facial utilizes the latest research designed and formulated to help calm the appearance of sensitive skin. Every step of the facial is a uni-dose preparation only opened and used at the time of the application.
*Red-Out® products are not intended to treat, diagnose, cure or prevent any disease.
5 Facials **\$129.50**



SENSITIVE SKIN
Red-Out® Express Soothing Facial (SU76)
This facial helps to reduce the appearance of redness caused by the environment and stress. It helps to soothe the appearance of the skin. In 30 minutes, you will see the difference as skin becomes more hydrated and smoother looking. This service is great for supplementing the monthly Repêchage® Red-Out® Facial.
*Red-Out® products are not intended to treat, diagnose, cure or prevent any disease.
5 Facials **\$79.50**



ALL SKIN TYPES
Opti-Firm® Eye Contour Treatment (SU5)
A professional treatment based on the latest advances in skincare and ingredients that helps to combat the visible appearance of dark circles, puffiness and wrinkles. Every step of the facial is a uni-dose preparation only opened and used at the time of the application.
12 Treatments **\$99.00**



HYDRATING, MOISTURIZING, CALMING
FUSION™ Express Bar and Spa Masks
The Fusion™ Express Bar and Spa Masks have been specially designed to enhance and stimulate the senses while providing effective, calming and balancing results.
12 Treatments



Assorted Masks \$129.50 (FEM A)
Vanillafina FUSION® Masks Only **\$129.50 (FEM V)**
Chocofina FUSION® Masks Only **\$129.50 (FEM C)**
Matchafina FUSION® Masks Only **\$129.50 (FEM M)**
Berryfina FUSION® Masks Only **\$129.50 (FEM B)**



Repêchage® Silver Ball Massager (SU73)
This Silver Ball Massager is made of high quality 316 grade stainless steel. Employed in conjunction with the facial massage, it stays cool to the touch while providing consistently correct pressure. Perfect as a massage tool for sensitive skin.
\$79.50

NORMAL TO COMBINATION SKIN TYPES
Classic European Facial (Kit 5)
This kit is the perfect solution for customizing treatments for combination skin. A thorough deep cleansing combined with our signature massage helps to hydrate and purify combination skin while skin is soothed with St. John's Wort, and Green and White Teas. Skin will feel cleansed, toned and moisturized.
30 Facials **\$185.00**



ALL SKIN TYPES
Lamina Lift™ Hydrating Seaweed Mask (SU69A)
The Repêchage® Lamina Lift™ Hydrating Seaweed Mask is instantly soothing and cooling, the perfect professional sheet mask to experience as an express treatment – whether as a stand-alone treatment, upgrade to other services, or accompaniment to clinical services, such as post-chemical peels, microdermabrasion, laser, and waxing. Formulated with a blend of seaweeds rich in 12 vitamins, 18 amino acids, and 42 trace elements and minerals, Orange Water, and Aloe, this convenient mask does it all in 10-15 minutes, helping to make skin appear brighter and more hydrated to create a refreshed and glowing complexion.
25 Sheet Masks **\$75.00**





BACK BAR

FOR COMBINATION SKIN
T-Zone Balance Cleansing Complex (SU40)
Formulated with St. John's Wort, Green and White Teas to help skin feel cleansed, toned and moisturized.
480 ml / 16 fl oz **\$32.50**

FOR DRY SKIN
Hydra 4® Cleanser (SU45)
The gentle formula for sensitive skin is infused with seaweeds and naturally hydrating Olive extracts to remove grime and makeup. Cleanses without drying the skin.
480 ml / 16 fl oz **\$36.00**

FOR NORMAL/OILY SKIN
Hydra Refine® Cleansing Mousse (SU49)
Washes deep down, and helps eliminate pore-clogging oil. This soap free formula contains Seaweed with astringent Lemongrass and fresh, cooling Cucumber. Hydra Refine Cleansing Mousse rinses clean & clear. Helps to minimize oily shine.
480 ml / 16 fl oz **\$39.50**

FOR COMBINATION SKIN
T-Zone Balance Toning Complex (SU41)
T-Zone Balance Toning Complex for Combination Skin contains St. John's Wort, which tones and soothes skin.
480 ml / 16 fl oz **\$27.50**

FOR DRY, SENSITIVE SKIN
Hydra 4® Tonic (SU46)
Formulated with St. John's Wort, and Green and White Tea extracts help to calm, sooth and balance combination skin. Use after cleansing or as often as desired to refresh your complexion.
470 ml / 15.89 fl oz **\$32.50**

FOR NORMAL TO OILY SKIN
Hydra Refine® Astringent (SU50)
Marine Seaweed, astringent Lemongrass and fresh Cucumber help to reduce appearance of oiliness. Use anytime to instantly freshen and refine the skin.
480 ml / 16 fl oz **\$35.00**

FOR COMBINATION SKIN
Herbal Astringent (SU9)
This blend of natural extracts contains Laminaria Digitata, and Willow Bark extracts to deep cleanse and refresh skin as it helps reduce the appearance of shine and absorb excess oil. Great after deep pore cleansing. Contains the extracts of seven natural herbs, including Sage, Rosemary, Chamomile, Colt's Foot, Dutch Rush, Balm Mint and Witch Hazel.
480 ml / 16 fl oz **\$39.50**



FOR NORMAL TO OILY SKIN
Aqua Massage Cream (SU54)
Provides gentle friction and the ideal glide to leave all skin types relaxed and hydrated. Seaweed, Chamomile, and Aloe combine to create this greaseless massage formula.
240 ml / 227 g / poids net wt 8 oz **\$29.50**

FOR NORMAL TO DRY SKIN
Herbal Massage Cream (SU18)
Provides the ideal glide to perform proper facial massage. Contains Roman Chamomile, Rose and Lavender.
240 ml / 227 g / poids net wt 8 oz **\$29.50**

FOR ANTI-AGING MASSAGE
Hydro-Complex® PFS (M03)
Hydro-Complex is the second step of our the Four-Layer Facial®. This luxurious formula never leaves skin feeling greasy and is based on the Physiological Filtrate of Seaweed (PFS), our proprietary formula comprised of two unique sea plants that are natural sources of 12 vitamins including B₁₂, C, E, K and Beta Carotene, 18 amino acids, and 42 trace elements.
240 ml / 235 g / poids net wt 8.3 oz **\$49.50**

EXFOLIATION FOR ALL SKIN TYPES
Honey and Almond Scrub (SU16)
Pure Honey, Oatmeal and Almond Meal help purify and deep cleanse. Leaves skin super clean and smooth. Can be used alone, mixed with a creamy cleanser, or combined with buttermilk for a smoother exfoliation.
240 ml / 326 g / poids net wt 11.5 oz **\$32.50**

FOR NORMAL/OILY SKIN
Hydra Refine® Clarifying Mask (SU52)
This mask helps to deep cleanse and absorb excess oil without drying, while it exfoliates with tiny spheres of Rice Bran Wax and Lactic Acid. With a special Seaweed, Lemongrass and Cucumber blend, it leaves skin feeling clean and smooth.
240 ml / 226 g / poids net wt 8 oz **\$42.50**

FOR SENSITIVE SKIN
Vita Cura® Enzymatic Micropeel (SU65)
Pure Papaya enzyme provides a mild, vegetable-based exfoliator. Based on Papain, the proteolytic enzyme is derived from the latex of the green papaya fruit. This works to enhance the tone and texture of the skin. Gently removes dead skins cells, revealing brighter, younger looking skin.
36 unidose applications **\$99.50**

PRO EXFOLIATION
Biolight® Glyco-Sea® Glycolic Peel (SU66)
This formula of glycolic acid combined with our unique Laminaria Complex reveals a brighter, more youthful looking complexion. 30% Glycolic Acid / 3.5pH
*Sunburn alert: this product contains Alpha Hydroxy Acid (AHA) that may increase your skin's sensitivity to the sun and particularly the possibility of sunburn. Use a sunscreen and limit sun exposure while using this product and for a week afterwards.
36 unidose applications **\$72.00**



GENTLE EXFOLIATION

Rapidex® Marine Exfoliator with Phyto-Marine Actives (PA 1P)

Since 1996 Rapidex® is a safe and effective uni-dose program based on phyto-marine extracts and natural fruit acids that will gently exfoliate the skin, helping the skin to appear more even in tone and texture, feel softer and smoother. Lydia Sarfati created Rapidex® Marine Exfoliator to provide a controlled application process because she observed that clients were over-exfoliating their skin, whether with microdermabrasion, chemical and acid peels or laser resurfacing procedures. Rapidex®, an international skin care sensation, and the first of its kind. Our unique uni-dose packaging stays fresh, provides a large, pre-saturated cotton swab soaked in our exclusive formula. Simply break open package and swipe. After nightly cleansing apply evenly over skin on the face, throat and/or back of hands. Not to be used on/or around eye area. 8% acid / 3.5pH 50 unidose applications / Each 1.5 ml / .05 fl oz **\$99.00**



Desincrustation Solution (SU64)

Repêchage® Desincrustation Solution helps to unclog pores, making the deep pore cleansing process easier to manage. Soak cotton with the solution and wrap around the electrode and apply directly to the skin for 5-7 minutes. Remove the solution with a toner and proceed with deep pore cleansing. Be sure to follow your state board regulations or follow the advice of your professional instructor. 480 ml / 16 fl oz **\$35.50**

Galvanic Gel (SU63)

Repêchage® Galvanic Gel is a moisturizing gel. Ideal with iontophoresis on a positive pole, also great for skin hydration. 480 ml / 16 fl oz **\$31.50**

FOR COMBINATION SKIN

Sea Mud Perfecting Mask (SU12)

For Problem/Oily Skin

This creamy sea mud mask deep cleanses and helps absorb excess oil, reducing the appearance of shine. Three different clays help to absorb oils while Seaweed and Allantoin help to leave the skin feeling refreshed. 240 ml / 8 fl oz **\$31.00**

BACK BAR

FOR PROBLEM/OILY SKIN

Clear Complexion Mask (SU15)

This mask helps to deep cleanse and remove excess oil from the skin. Helps to clarify the complexion after extractions. 240 ml / 227 g / poids net wt 8 oz **\$32.50**

FOR COMBINATION SKIN

Balancing Hydrating Mask (SU14)

Use Balancing Hydrating Mask after extraction on combination skin or as a second mask on oily or problem skin. Optional: for greater soothing effect, mix with 1/2 teaspoon of Repêchage® Calcium & Calamine powder. You may also add 3 drops of Repêchage® Custom Blend Purifying and Calming Essential Oils for an aromatherapy experience. 218 ml / 253 g / poids net wt 8.9 oz **\$32.50**

FOR NORMAL TO DRY SKIN

Hydra 4® Mask (SU48)

A soothing formula infused with fresh Seaweed and Olive leaf extracts help smooth, and calm while it restores a youthful appearance to the skin. Helps lessen the appearance of skin irritation caused by travel, climate changes, sun exposure and pollution. Essential vitamins and proteins. Improves the look of skin. 240 ml / 269 g / poids net wt 9.5 oz **\$38.00**

FOR MATURE/DRY SKIN

Hydro-Moisture Masque (SU13)

This soothing, hydrating mask is based on vitamin and mineral rich seaweed. Retinyl Palmitate (Vitamin A) helps improve skin tone and texture. Moisture-boosting Hyaluronic Acid and Shea Butter along with Vamin E (Tocopheryl Acetate) make this an ideal skin smoothing treatment. May also be used on hands, neck and décolleté for a smoothing and hydrating treatment. 225 ml / 227 g / poids net wt 8 oz **\$36.00**

CALMING POWDER

Calcium and Calamine Mask (SU17)

Mix this powder with yogurt or buttermilk to create the ultimate calming and soothing mask. Can also be added to any clay or cream mask for an extra soothing effect. 480 ml / 16 fl oz **\$29.50**

FOR ALL SKIN TYPES

C-Serum® Seaweed Filtrate (SU70)

This is a lightweight, oil-free serum. C-Serum®, short for cytoserum, is our special seaweed Laminaria Digitata filtrate, seaweed extract rich in vitamins, minerals, amino acids, trace elements, phlorotannins, and antioxidants. C-Serum® and is the first step of our world-renown Four-Layer Facial®— a must have for more luminous skin! Can be used alone or with galvanic current to restore, hydrate and smooth skin. 60 ml / 2 fl oz **\$45.00**

FOR COMBINATION SKIN

T-Zone Balance Moisture Complex (SU43) T-Zone Balance Moisture Complex is formulated T-Zone Balance Moisture Complex is formulated to help smooth and hydrate skin, making it an ideal moisturizer for combination and sensitive skin. 116 ml / 113 g / poids net wt 4 oz **\$31.00**



BACK BAR



Hydra 4® Day Protection Cream (SU47)
This lightly whipped formula is the ideal moisturizer. Olive Oil extract is combined with four Seaweed extracts including Laminaria Digitata, Ulva Compressa, Ahnfeltia Plicata, and Ulva Lactuca to help to sooth and hydrate skin, while helping to maintain daily essential moisture.
116 ml / 113 g / poids net wt 4 oz **\$36.00**



Eye Rescue Pads with Seaweed Filtrate And Tea Extracts
Breathe new life into the delicate eye area! Repêchage® Eye Rescue Pads with Seaweed, Cucumber, and potent Tea blend will help eyes look and feel refreshed. Use during all facial treatments and after eye brow waxing, and during body massage. It's like the ultimate 10 minute vacation for eyes.
120 Pads **\$29.50 (SU62)**
15 Pads **\$5.00 (RR52TRVL)**



THALLASO EXPERIENCE
Seaweed Body Contouring Mask
Based on the tradition of European Thalassotherapy, this body mask combines Mint and fresh Seaweed extracts of Laminaria Digitata and Ascophyllum Nodosum with Kaolin clay to help soften skin, making it appear more toned and firm. The treatment is warmed and smoothed over the body, also making it great for relaxing sore, stiff muscles! Wonderful to use with a Vichy Shower.
1 Gallon / 3.7 l **\$175.50 (GSU21)**
32 fl oz / 960 ml **\$49.50 (SU21)**

FOR CONTOURING/FIRMING
Peppermint Sea Twist® (KIT 1)
This refreshing body treatment combines Peppermint Oil with freshly harvested Seaweed to create a stimulating, invigorating experience. The treatment ends with a seaweed body cream to give that finishing, soft and silky touch your skin. Enough product for 16 full body wraps, or 32 half body treatments
\$185.00



PEPPERMINT SEA TWIST®

BACK BAR



FUSION™ Chocolate Espresso Face & Body Sugar Scrub (SU77)
The Repêchage® FUSION™ Chocolate Espresso INVIGORATE Face & Body Sugar Scrub awakens your client's senses and skin with Cocoa, Coffee, a Multi-Fruit AHA Complex, Madagascar Vanilla and Seaweed extracts to help exfoliate and reveal glowing skin.
960 ml / 1.10 kg / poids net wt 39 oz **\$55.00**



FUSION™ Matcha Lemongrass Face & Body Sugar Scrub (SU78)
The Repêchage® FUSION™ Matcha Lemongrass DEEP CLEANSE Face & Body Sugar Scrub smooths and exfoliates with Matcha Green Tea, Lemongrass, Aloe, a Multi-Fruit AHA Complex and Seaweed extracts to reveal skin that looks and feels rejuvenated and refreshed.
960 ml / 1.10 kg / poids net wt 39 oz **\$55.00**



Honey Body Polish
Indulge the body with pure Honey, Almond Meal from fresh crushed Almonds and Oatmeal. Based on an ancient beauty ritual, the Repêchage Honey Body Polish sloughs off dead skin cells, leaving the skin smoother, hydrated and refreshed. Mix with fresh buttermilk for added benefits!
1 Gallon / 3.7 l **\$195.00 (GSU22A)**
32 fl oz / 960 ml **\$59.50 (SU22A)**



Pomegranate Cran-Apple All Over Body Scrub
Pure Cane Sugar with other ingredients derived from Pomegranate, Cranberry and Apple create a gentle, natural exfoliant that leaves skin deliciously smooth and delectably radiant.
1 Gallon / 3.7 l **\$150.00 (GSU59)**
32 fl oz / 960 ml **\$59.50 (SU58)**



Sea Spa Glow
Repêchage® Sea Spa Glow is an all over body exfoliant treatment based on Dead Sea Salts and infused with moisturizing Seaweed and Olive Oil. Sea Spa Glow will leave you feeling energized and refreshed, with super smooth, silky soft skin.
1 Gallon / 3.7 l **\$165.00 (GSU46)**
960 ml / 1.22 kg / poids net wt 43 oz **\$69.50 (SU44)**



Seaweed Bath (BC4)
Our seaweed is harvested from the clean seawaters off the Coast of Maine. By our proprietary method of processing it delivers all the benefits from the sea is a potent concentration of Laminaria Digitata & Ascophyllum Nodosum Seaweed Extracts, rich in vitamins, minerals, amino acids and trace elements. Great for hydrotherapy.
960 ml / 32 fl oz **\$35.50**





BACK BAR

Seaweed Body Cream

Seaweed Body Cream is based upon the renowned sea therapies found in the most exclusive European spas. This luxurious aqua cream is enriched with anti-oxidants Vitamin C and E, Ginkgo Biloba, two select sea plants, a natural source of Vitamin B Complex and minerals. Repêchage® Seaweed Body Cream veils the body in essential moisture, leaving the skin silky smooth and ultra touchable while reducing dryness and flakiness. Ideal for all-over body massage. Does not require a shower. Never greasy.
3.7 l / 3.7 kg / poids net wt 130.5 oz **\$175.50 (G SU22)**
960 ml / 965 g / poids net wt 34 oz **\$55.00 (SU22)**



Sea Spa Massage Bath & Body Oil

This rich Soybean based blend of natural herbal and citrus extracts, along with Carrot Oil, a source of beta carotene, and essential oils is the ideal all-over massage oil. With no artificial color or synthetic perfume, it may also be used as a luxurious bath and after bath oil to provide superlatively soft and silky skin.
3.7 l / 1 Gallon **\$169.50 (GBC37)**
960 ml / 32 fl oz **\$49.50 (SU67)**



Vita Cura® Body Contouring Cream

This rich cream improves the appearance of body contours while it is smoothing and skin conditioning. Massage into skin during body treatments, paying special attention to areas of concern.
960 ml / 1 kg / poids net wt 35 oz **\$75.00 (SU33)**

Sea Spa Hand Cream (SU38)

With Lavander Essential Oil

Sea Spa Hand Cream with moisturizing Seaweed helps insulate hands, with a surge of soothing moisture. Use during facials, massage, and at the shampoo bowl.
480 ml / 460 g / poids net wt 16 oz **\$45.50**



BACK BAR

Sea Spa Foot Cream (SU39)
With Peppermint Oil

Sea Spa Foot Cream utilizes natural Seaweed rich in vitamins, minerals and amino acids combined with Shea Butter to prevent dryness. Mint essential oil cools tired, achy feet. A foot massage is a great add on during facial treatments. Also ideal during pedicures.
480 ml / 454 g / poids net wt 16 oz **\$45.50**



Vita Cura® Triple Action Nutri Oil (SU71)

Vita Cura® Triple Action Nutri Oil with Phyto Actives veils the skin in luxury. Our blend of exotic oils including Mafura, and Sweet Almond, along with Madagascar Vanilla and Rooibos helps to replenish the skin's moisture barrier and provide deep conditioning benefits. Excellent after waxing or for use during massage.
480 ml / 16 fl oz **\$46.50**



Skin Relief Soothing Gel (SU57)

This soothing gel works to hydrate skin. The combination of Green, Rooibos and White Teas with Aloe Leaf and Cucumber extract provide soothing relief to help reduce skin irritation after waxing or can be used after micro-dermabrasion. Freeze a soufflé cup filled with product and apply to skin for calming, cooling and soothing relief.
480 ml / 16 fl oz **\$45.50**



Essential Oil of Peppermint

May be added to professional body treatments for its stimulating benefits. Can be added to foot cream, and massage cream. Also great as a stimulating scalp massage.
90 ml / 3 fl oz **\$59.00 (EO1B)**
15 ml / .50 fl oz **\$18.50 (EO1C)**



Custom Blend Purifying & Calming Essential Oils

This blend of natural essential oils of Lavender, Ylang Ylang & Tangerine soothes skin. Excellent when mixed with Herbal Massage Cream or when a few drops are added to 4A & 4B of the Four-Layer Facial for a sensorial experience. Can also be added to Seaweed Body Cream for an aromatherapy massage to help soothe muscles, and is also great as a bath oil for at-home care.
90 ml / 3 fl oz **\$59.00 (EO1A)**
15 ml / .50 fl oz **\$16.50 (EO1)**



Opti-Cleanse® Extra Gentle Non-Oily Eye Makeup Remover (SU36)

Removes makeup gently yet thoroughly and rinses away completely. Fragrance free, with a pH of 7. Will not irritate the eye area. Warning: use caution when cleansing around eye area.
240 ml / 8 fl oz **\$19.50**

BACK BAR



SeaSmooth Artisan Seaweed Wax® (WAX1)
Repêchage® SeaSmooth is infused with select sea plants that deliver vitamins, minerals and trace elements for unparalleled smoothness. Safflower Oil, Aloe Vera and two Seaweeds soothe and calm.
400 ml / 430 g / poids net wt 15 oz **\$18.50**



Olea Europea Hard Wax (WAX2)
With Olive Oil
Repêchage® Olea Europea Hard Wax is a European-style hard wax in convenient and sanitary uni-dose pods to properly depilate hair from areas such as the nose and ears. Also ideal for Brazilian waxing.
12 pods **\$21.00**



Double Wax Warmer (EQ3)
The Repêchage® Double Wax Warmer contains two compartments with separate thermostat controls which allows for warming separate wax pots at different times. This double wax warmer will fit 13.5oz jars on both sides. Keep the temperature at 85°F for best results.
110V **\$119.50**



Single Wax Warmer (EQ5)
Our single professional wax warmer heats wax quickly and evenly. Specially designed to fit our Olea Europa Hard Wax pods. Lightweight and portable, it's the ideal choice in the waxing room, or at the Facial Bar.
\$45.00



Signature Repêchage® Dry Brush (BB2)
Ideal for use during dry brushing before waxing and bc
\$7.50



Wooden Stick Applicators (MI20)
100 ct **\$3.25**



Muslin Strips (M119)
100 strips. **\$12.50**



Esthetic Student Facial Kit (KIT STUDENT)
This facial kit contains everything needed to offer exceptional hands-on training for students entering the esthetics profession. Contains: T-Zone Balance Cleansing Complex for Combination Skin (480ml/460g/poids net wt 16oz), T-Zone Balance Toning Complex for Combination Skin (480ml/16fl oz), T-Zone Balance Moisture Complex for Combination Skin (116ml/113gpoids net wt 4oz), Honey and Almond Scrub for All Skin Types (240ml/326g/poids net wt 11.5oz), Balancing Hydrating Mask (240ml/227g/poids net wt 8oz), Aqua Massage Cream (240ml/227g/poids net wt 8oz), Opti-Cleanse Extra Gentle Non-Oily Eye Makeup Remover (130ml/4.4fl oz), Glass Bowl. Enough product to perform 30 Classic European Facials
\$199.00



Student Cosmetology Kit (KIT STCOS)
This kit contains everything necessary for hands-on skin care training for the esthetics portion of cosmetology programs. Contains: T-Zone Balance Cleansing Complex (177ml/170g/poids net wt 6oz), T-Zone Balance Toning Complex (177ml/6fl oz), T-Zone Balance Moisture Complex (60ml/59g/poids net wt 2oz), Honey and Almond Scrub (60ml/85g/poids net wt 3oz), Herbal Massage Cream (240ml/227g/poids net wt 8oz), Opti-Cleanse Extra Gentle Non-Oily Eye Makeup Remover (2fl oz/59ml), Eye Rescue Pads (15 count), Sea Mud Perfecting Mask (120ml/127.5g/poids net wt 4.5oz), Spatula.
\$119.00

Hydra Blue® Collection for All Skin Types



Sea Cleanse® Foaming Seaweed Cleanser (RR37)
For All Skin Types
This rich-foaming cleanser removes dirt and debris without leaving your skin feeling dry or taut. A unique combination of natural surfactants and two select Seaweeds help keep skin feeling soft, smooth and clean without the feeling of dryness. 150 ml / 5 fl oz **\$19.75**



Opti-Cleanse® Extra Gentle Non-Oily Eye Makeup Remover (RR29)
Removes makeup gently yet thoroughly and rinses away completely. With a neutral pH of 7, it will not irritate the eye area. Fragrance free. *Warning: Be sure to close eyelid, and apply gently. 130 ml / 4.4 fl oz **\$14.50**



Herbal Astringent Pore Perfecting Solution (RR15)
For Oily/Problem Skin
This blend of natural extracts contains Laminaria Digitata, and Willow Bark extracts to deep cleanse and refresh skin as it helps reduce the appearance of shine and absorb excess oil. Contains the extracts of seven natural herbs, including Sage, Rosemary, Chamomile, Colt's Foot, Dutch Rush, Balm Mint and Witch Hazel. Perfect for men to use as an astringent after shaving. 177 ml / 6 fl oz **\$22.50**

Algo Mist® Hydrating Seaweed Facial Spray
For All Skin Types
Essence in a bottle! Unlike other products that are pure water in a bottle, Algo Mist® has a unique combination of Seaweed extract, Vitamin C, Ginkgo Biloba, Aloe and Orange Water to help keep skin feeling smooth and soft. Perfect for travel, but use it anytime—on the beach, at the gym, in the office, to refresh makeup or at home. The more hydrated the skin, the greater glowing complexion. 180 ml / 6 fl oz **\$18.50 (RR31)**
60 ml / 2 fl oz **\$7.50 (RR31T)**



C-Serum® Seaweed Filtrate (RR39)
Multi-Complex Serum
Every skin type can see and feel softer and smoother skin with this lightweight, oil-free serum. C-Serum®, short for cytoserum, is our special Laminaria Digitata filtrate, seaweed extract rich with 12 vitamins and minerals, 42 trace elements, and 18 amino acids, as well as phlorotannins, and antioxidants. C-Serum® is the first step of our world-renown Four-Layer Facial®—a must have for more luminous skin! See results as long as you are using this product daily. 30 ml / 1 fl oz **\$29.50**



Essential Oil of Seaweed (PA5)
This vitamin E and natural Seaweed oil is skin friendly, smoothing and fast absorbing. Can be used all over the face or around delicate eye contour area. Use on dry cuticles, or add a few drops to your favorite cream as a boost. Great beard oil for men too! 10 ml / .34 fl oz **\$19.75**



Hydra Blue® Collection for All Skin Types



Opti-Firm® Renewal Complex Night Cream (RR41)
For Dry Skin
A night cream that shows results! Helps to reduce the appearance of lines and wrinkles. Restores essential moisture and leaves skin radiant, refreshed and younger looking. Skin appears smoother. 30 ml / 24 g / poids net wt .84 oz **\$39.75**

Opti-Firm® Lift Cream Daytime Moisturizer (RR40)
For Dry Skin
Envelop your skin with our uplifting daytime formula. Infused with Laminaria Digitata seaweed, organic Aloe Vera and Ginkgo Biloba to help reduce the appearance of fine lines and wrinkles. 30 ml / 24 g / poids net wt .85 oz **\$36.75**



Opti-Firm® Eye Contour Cream (RR42)
For All Skin Types
Soothes the delicate eye area with Aloe, Cucumber and Chamomile, while the exclusive seaweed-based formula helps to diminish the appearance of fine lines and wrinkles. Helps to lessen the appearance of dark circles and puffiness. 15 ml / 15 g / poids net wt .5 oz **\$32.50**



Eye Rescue Pads with Seaweed Filtrate and Tea Extracts
Breathe new life into the delicate eye area! Repêchage® Eye Rescue Pads with Seaweed, Cucumber, and potent Tea blend will help eyes look and feel refreshed. It's like the ultimate 10 minute vacation for the eyes.. 60 Pads **\$19.50 (RR52)**
15 Pads **\$5.00 (RR52TRVL)**



Rapidex® Marine Exfoliator With Phyto-Marine Actives (PA 1)
Glow and Go!
Since 1996 Rapidex® is a safe and effective uni-dose program based on phyto-marine extracts and natural fruit acids that will gently exfoliate the skin, helping the skin to appear more even in tone and texture, feel softer and smoother. Lydia Sarfati created Rapidex® Marine Exfoliator to provide a controlled application process because she observed that clients were over-exfoliating their skin, whether with microdermabrasion, chemical and acid peels or laser resurfacing procedures. Rapidex®, an international skin care sensation, is the first of its kind. Our unique uni-dose packaging stays fresh, provides a large, pre-saturated cotton swab soaked in our exclusive formula. Simply break open package and swipe. After nightly cleansing apply evenly over skin on the face, throat and/or back of hands. Not to be used on/or around eye area. 14 Pack **\$29.50**



Hydro-Complex® PFS For Normal To Dry Skin (RR19)
Controlled Exfoliation
Hydro-Complex is the second step of our premier facial treatment, the Four-Layer Facial®. This luxurious formula never leaves skin feeling greasy and is based on the Physiological Filtrate of Seaweeds (PFS), our proprietary formula comprised of two unique sea plants that are natural sources of 12 vitamins including B₁₂, C, E, K and Beta Carotene, 18 amino acids, 42 trace elements and phlorotannins. Exfoliate and renew your skin. 45 ml / 42 g / poids net wt 1.5 fl oz **\$31.25**

Hydra Blue® Collection for All Skin Types



Hydro-Complex® PFS For Oily And Combination Skin (RR21)
Controlled Exfoliation
The perfect moisturizer for combination to oily skin! This oil-free formula, based on the Physiological Filtrate of Seaweed (PFS), a proprietary Seaweed based complex, helps to hydrate skin while lines and wrinkles appear to diminish.
45 ml / 42 g / poids net wt 1.5 fl oz **\$31.25**



One-Minute Exfoliating Mask (RR61)
This mask helps to deep cleanse and absorb excess oil without drying, while it exfoliates with tiny spheres of rice bran wax and kojic acid. With a special Seaweed, Lemongrass and Cucumber blend, it leaves skin feeling clean and smooth. See results as long as you are using the product.
60 ml / 68 g / poids net wt 2.4 oz **\$18.75**



Mineral Face Shield® (RR38)
This mineral-based water free formula with anti-oxidants, glides on sheer to the skin instantly creating an even-matte finish. Mineral Face Shield® is a skin-friendly formula that is gentle even on the most sensitive skin types. The perfect pre-makeup prep, leaves skin smooth and soft, never greasy.
60 ml / 60 g / poids net wt 2 oz **\$29.50**



Sea Spa Hand Cream (BC18)
This luxurious cream provides the ultimate hydration for hands with our unique, sustainably harvested Seaweed, rich in vitamins, minerals, and amino acids. Shea Butter instantly transforms dry, cracked hands at the surface of your skin, while Chamomile, Lavender, Eucalyptus and Green Tea extract help to soothe yet never feels sticky. You will see the difference!
60 ml / 57 g / poids net wt 2 oz **\$14.50**

Seaweed Body Cream (BC3)
Based on the renowned sea therapies found in the most exclusive European spas, this luxurious cream is enriched with Vitamin E, and Ginkgo Biloba and two additional select seaweeds. Repêchage Seaweed Body Cream leaves the skin silky smooth and ultra touchable with a visible reduction in dryness and flakiness. Great for men, too!
170 ml / 170 g / poids net wt 6 oz **\$18.00**



Triple Action Peptide Mask (RR28)
Helps Reduce Fine Lines and Wrinkles
Reveal glowing skin in as little as 10 minutes with this soft, cooling, sheet mask that combines the revitalizing benefits of Laminaria Digitata Seaweed extract with renewing Peptides to drench skin in replenishing moisture. Extracts of Sweet Almond Seed, Aloe and Mirabalís Jalapa will help skin will look rejuvenated, refreshed and restored.
5 sheet masks in a box **\$44.50**



Lamina Lift® Hydrating Seaweed Mask (RR71)
Repêchage® Lamina Lift® Hydrating Seaweed Mask is instantly refreshing and hydrating, leaving your skin dewy and glowing. Formulated with an extract of the proprietary Laminaria Digitata Seaweed together with extracts of Aloe Vera, Rooibos Tea, Licorice, Horse Chestnut and Orange Water, this convenient sheet mask helps to tone and brighten the appearance of the skin. You will see the difference.
5 sheet masks in a box **\$22.50**

Hydra 4® Collection for Sensitive Skin



Hydra 4® Cleanser (RR47)
The gentle formula for sensitive skin is infused with multiple Seaweed extracts, Lactic Acid and naturally hydrating Olive extract and Coconut Oil to remove grime and makeup without drying the skin.
177 ml / 177 g / poids net wt 6 oz **\$19.75**



Hydra 4® Tonic (RR48)
Soothe, calm and balance sensitive skin. This fine mist, used twice a day, will help balance skin post-cleansing, and prepare the skin for moisture and hydration.
177 ml / 6 fl oz **\$16.50**



Red-Out® Cleanser (RR56)
Helps to reduce the visible appearance of redness. Cleanses sensitive skin gently and effectively. Our Red-Out® Cleanser gently foams to cleanse sensitive skin. This formula combines a blend of seaweeds with Orange Water and Aloe.
177 ml / 165 g / poids net wt 6 oz **\$26.25**



Hydra 4® Mask (RR50)
A super formula infused with fresh Seaweed and Olive leaf extracts help smooth, and calm while it restores a youthful appearance to the skin. Helps lessen the appearance of skin irritation caused by travel, climate changes, sun exposure and pollution. Contains essential vitamins and proteins to help improves the look of skin.
60 ml / 67 g / poids net wt 2.4 oz **\$17.00**



Red-Out® Serum (RR55)
Helps to reduce the visible appearance of redness. This light-weight serum combines sustainably harvested seaweed with Quercetin and Rutin. A natural herbal aroma from Green Tea further helps relax your senses. Red-Out® Serum has helped many people to see and feel the difference in the appearance of their skin.
30 ml / 29 g / poids net wt 1 oz **\$44.50**

Red-Out® Soothing Sheet Mask (RR51)
A Sea of Calm for Sensitive Skin! Repêchage® Red-Out® Soothing Sheet Mask helps to reduce the appearance of redness caused by the environment and stress. This sheet mask utilizes the blend of vitamins, minerals, trace elements, amino acids and antioxidants found in Seaweeds, combined with skin softeners such as Allantoin, Aloe, Hyaluronic Acid and Mirabilis Jalapa extract to bathe skin in moisture while it helps to soothe the appearance of the skin. In 15 minutes you will see the difference.
5 sheet masks in a box **\$42.50**



Hydra 4® Starter/Travel Collection (SSP3)
Entire collection in convenient TSA-approved travel sizes, packed in a signature zip-top travel case. Includes:
All four Hydra 4® products.
travel **\$25.00**





T-Zone Collection for Combination Skin



T-Zone Balance Toning Complex (RR12)
Formulated with St. John's Wort, Green and White Tea extracts help to calm, soothe and balance combination skin. Use after cleansing or as often as desired to refresh your complexion.
177 ml / 6 fl oz **\$15.50**



T-Zone Balance Moisture Complex (RR13)
Formulated with Green and White Teas to smooth and hydrate skin. A superior cream that is light enough to be used twice a day. Provides calming and soothing moisture. Non-comedogenic.
60 ml / 59 g / poids net wt 2 oz **\$16.25**



Honey and Almond Scrub (RR26)
Pure Honey, Oatmeal and Almond Meal help purify and deep cleanse. Leaves skin super clean and smooth.
60 ml / 85 g / poids net wt 3 oz **\$17.50**

T-Zone Balance Cleansing Complex (RR11)
Formulated with St. John's Wort, Green and White Teas to help skin feel cleansed, toned and moisturized.
177 ml / 170 g / poids net wt 6 oz **\$15.50**



T-Zone Balance Shine-Control Serum (RR10)
This lightweight, pore refining serum contains Salicylic Acid, Seaweed, Green Tea, Cucumber and Witch Hazel extracts to help fight the appearance of excess oil and remove dead skin cells without over-drying. Leaves skin fresh, clean and shine-free. After cleansing, apply lightly over the face, or on areas of concern.
30 ml / 30 g / poids net wt 1 oz **\$19.50**



Hydra Refine® Cleansing Mousse (RR58)
Washes deep down, and helps eliminate pore-clogging oil. This soap free formula contains Seaweed with astringent Lemongrass and fresh, cooling Cucumber. Hydra Refine Cleansing Mousse rinses clean & clear. Helps to minimize oily shine.
150 ml / 5 fl oz **\$16.50**



Hydra Refine® Astringent (RR 59)
Seaweed, astringent Lemongrass and fresh Cucumber help to reduce appearance of oiliness. Use anytime to instantly freshen and refine the skin.
177 ml / 6 fl oz **\$15.50**



Hydra Dew® Collection for Normal to Dry Skin
Say Goodbye to Dry!®



Hydra Dew® Gentle Cleansing Mousse (RR65)
An ultra mild, soap free, foaming cleanser that lifts away makeup and daily grime. Moisture-enhancing Seaweed, calming and soothing Waterlily and Willowherb, and naturally emollient Sunflower will leave skin feeling clean and smooth.
150 ml / 5 fl oz **\$19.50**



Hydra Dew® Smoothing Toner Spray (RR66)
Helps to reduce the appearance of dryness, lessens the feeling of tightness and helps skin feel smoother in one easy step. Use prior to application of Hydra Dew® moisturizing products to help skin feel smooth.
177 ml / 6 fl oz **\$16.50**



Hydra Dew® Nourishing Gel Cream (RR68)
A rich moisture replenishing cream with the texture of a gel. Waterlily and the amino acid Proline help the skin look and feel smooth, dewy, translucent. Note: caution should be used when applying around eye area.
30 ml / 28 g / poids net wt 1 oz **\$25.00**



Hydra Dew® Moisturizing Day Cream (RR67)
This light, fast absorbing day cream helps skin to appear dewy, supple and luminous. Our exclusive natural ingredients, including Seaweed, Water Lily, Willow Herb and Sunflower Seed extract help to reestablish moisture, helping to smooth the appearance of fine lines and wrinkles.
60 ml / 58 g / poids net wt 2 oz **\$22.50**



Hydra Dew® Illuminating Cream Mask (RR69)
Helps to improve the appearance of dry skin, helping to create a dewy-looking complexion. This formula, contains Waterlily and the amino acid Proline to help reduce the appearance of dryness and flakiness. Natural light reflecting minerals make skin look beautiful under any light. Skin looks illuminated and virtually flawless.
60 ml / 56 g / poids net wt 2 oz **\$19.50**



Hydra Dew® Starter/Travel Collection (HDT)
Entire skin care collection in convenient, TSA-approved, travel sizes. Packed in a zip-top travel case. Includes: All 5 Hydra Dew® products.
travel **\$26.50**

Vita Cura® Collection for Smoother, Younger-Looking Skin



Vita Cura® Triple Action Cleansing Cream (RR85)
Gently cleanses and soothes skin while delivering smoothing benefits. This unique formula combines Chamomile, Shea Butter, Squalane, Ginkgo Biloba and Laminaria Digitata seaweed to remove water and oil-soluble debris while leaving skin feeling clean and smooth.
177 ml / 173 g / poids net wt 6 oz **\$21.50**

Vita Cura® Renewal Toner (RR86)
This toner restores natural balance and gently exfoliates to reveal a younger looking complexion. Enriched with moisture-binding Laminaria Digitata Seaweed and Green and White Teas, this formula also contains skin-soothing Aloe Vera, Chamomile and Orange Fruit Water to leave your complexion feeling smooth and fresh.
177 ml / 6 fl oz **\$21.50**



Vita Cura® Triple Firming Cream
Once you try this unique formula of super-skin-softening Shea, Mango and Cocoa Butters combined with messenger Peptides and Seaweed Extracts, you will never want to use anything else. Helps skin appear firmer and soft.
30 ml / 28 g / poids net wt 1 oz **\$42.50 (RR83)**
50 ml / 48 g / poids net wt 1.7 oz **\$76.50 (RR87)**



Vita Cura® Renewal Serum (RR88)
Luminous skin will be yours! Vita Cura® Renewal Serum contains deep sea Thermus Thermophilus and Laminaria Digitata Seaweed Extract to help complexion feel softer and smoother, lessening the appearance of fine lines and wrinkles. Hyaluronic Acid provides additional moisture, helping skin look softer, smoother and more youthful.
30 ml / 1 fl oz **\$39.50**

Vita Cura® Starter/Travel Collection (VCT)
Your favorite antiaging products in convenient TSA-approved travel sizes in a clear signature zip-top travel bag. Includes: Vita Cura® Cleanser, Toner, Triple Firming Cream and Renewal Serum.
travel **\$47.50**



Vita Cura® Opti-Lift® Serum (RR84)
Based on patented technology and advanced skincare knowledge, Repêchage Vita Cura® Opti-Lift® Serum utilizes a three-dimensional biopolymer from Pure Almond Protein that helps diminish the appearance of crow's feet and other signs of premature aging. Can be used day or night.
15 ml / 15 g / poids net wt .5 oz **\$32.50**



Biolight® Brightening Collection for Dull, Uneven Skin



Biolight® Brightening Cleanser (RR92)
Biolight® Brightening Cleanser is formulated to remove daily grime, pollution and makeup. Our exclusive Laminaria Complex contains Seaweeds combined with Willow Bark, Gotu Kola and Licorice extracts to reveal a more luminous looking complexion. Daisy extract helps to reduce the appearance of uneven skin tone and hyperpigmentation. Your first step to brighter, more radiant looking skin.
**Warning: use caution when using around eye area.*
180 ml / 6 fl oz **\$19.75**

Biolight® Brightening Toner (RR93)
Refines and clarifies the appearance of the skin, leaving it looking noticeably smoother and brighter. Our exclusive Laminaria Complex contains select Seaweeds, Willow Bark, Licorice and Gotu Kola to help skin look smoother and brighter, and helps reduce the appearance of uneven skin tone and hyperpigmentation.
**Warning: use caution when using around eye area.*
180 ml / 6 fl oz **\$18.50**



Biolight® Frost Bright™ Eye Contour Gel For Dark, Tired Eyes (RR98)
Repêchage Biolight® Frost Bright™ Eye Contour Gel contains a unique combination of ingredients to help instantly awaken tired looking eyes. Cooling and refreshing, this gel contains Caffeine, Cucumber Oil, and two Peptides to help reduce the appearance of fine lines and wrinkles leaving the skin feeling refreshed and cool.
**Warning: use caution when using around eye area.*
15 ml / 15 g / poids net wt .5 oz **\$29.00**

Biolight® Brightening Collection for Dull, Uneven Skin



Biolight® Brightening Day Cream (RR96)
Our exclusive Laminaria Complex contains two select Seaweeds combined with Willow Bark, Gotu Kola and Licorice Extracts to reveal a more luminous complexion. This daily moisturizer fortified with peptides will help you see the difference in your skin.
30 ml / 30 g / poids net wt 1 oz **\$49.50**

Biolight® Brightening Skin Serum (RR94)
This breakthrough serum contains three unique peptides to help brighten and even the appearance of skin tone due to the sun and age. Our exclusive Laminaria Complex contains Seaweeds combined with Willow Bark, Gotu Kola and Licorice extracts to help reveal younger looking skin and uncover a complexion that looks more radiant, luminous, and even toned. Benefits last with regular use.
15 ml / .5 fl oz **\$37.50**

Biolight® Brightening Overnight Cream (RR95)
Help smooth skin while you sleep! This power-packed night cream combines three peptides to help support the appearance of even skin tone. Our exclusive Laminaria Complex contains two select Seaweeds combined with Willow Bark, Gotu Kola and Licorice extracts that work to help reveal a more luminous and radiant looking complexion.
30 ml / 27 g / poids net wt 1 oz **\$59.00**



Biolight® Brightening Miracle Mask (RR97)
This creamy mask boosts radiance and helps even the appearance of skin tone. Our proprietary Laminaria Complex, with two select Seaweeds combined with Willow Bark, Gotu Kola and Licorice extracts work to help reveal a more radiant looking complexion. Glycolic and Kojic Acid gently exfoliate skin.
**Sunburn alert: this product contains Alpha Hydroxy Acid (AHA) that may increase your skin's sensitivity to the sun and particularly the possibility of sunburn. Use a sunscreen and limit sun exposure while using this product and for a week afterwards.*
59 g / poids net wt 2 oz **\$23.50**



Biolight® Brightening Sheet Mask (RR99)
The Repêchage® Biolight® Brightening Sheet Mask goes beyond brightening, utilizing the latest bio-technology, including Alpha Arbutin and Diglucosyl Gallic Acid combined with our exclusive Repêchage® seaweed extracts. Helps sallow, dull skin look rejuvenated, glowing and restored while it helps control the appearance of uneven tone.
5 sheet masks in a box **\$44.50**

FUSION™ Collection

FUSION™ Matcha Lemongrass Face & Body Sugar Scrub (RR45)
Smooth and exfoliate with Matcha Green Tea, Lemongrass, Aloe, Multi-Fruit AHA and Seaweed, extracts to reveal skin that looks and feels rejuvenated and refreshed.
118 ml / 135 g / poids net wt 4.7 oz **\$12.50**



FUSION™ Chocolate Espresso Face & Body Sugar Scrub (RR44)
The Repêchage® Fusion™ Chocolate Espresso Invigorate Sugar Scrub awakens your senses and your skin with Cocoa, Coffee, Multi-Fruit AHA Complex, Madagascar Vanilla and Seaweed extracts to help exfoliate, revealing glowing skin.
118 ml / 135 g / poids net wt 4.7 oz **\$12.50**



FUSION™ Collection



FUSION™ Face And Body Wash
Indulge yourself and your loved ones with this mild and gentle gel cleanser with our exclusive Laminaria Complex. This rich, foaming cleanser can be used on face and body and is suitable for all skin types.
Warning: use caution when cleansing around eye area.
60 ml / 2 fl oz **\$5.00 (BC41)**
240 ml / 8 fl oz **\$14.75 (BC42)**



FUSION™ Face Moisturizer (RR36)
This soothing cream is a rich soufflé of Coconut Oil, Aloe Vera, Chamomile, Vanilla and Rooibos Tea and Laminaria Complex to deliver soft, smooth skin.
120 ml / 119 g / poids net wt 4 oz **\$14.50**



FUSION™ Pumpkinfina Multivitamin Mask (RR34)
Help skin look and feel younger with Pumpkin and Vanilla. This mask contains Vitamins A and C from pumpkin to help refine your complexion and restore moisture, while triple clays deep cleanse, leaving it looking soft, smooth and refreshed.
90 ml / 80 g / poids net wt 3 oz **\$14.50**



FUSION™ Matchafina Cleansing Mask (RR35)
Deep cleanse and reveal softer, smoother skin. This mask combines three deep-cleansing clays — Kaolin, Diatomaceous Earth and Illite. Matcha Green Tea and seaweed help improve skin texture and overall complexion.
90 ml / 92 g / poids net wt 3 oz **\$14.50**



FUSION™ Chocofina Moisturizing Mask (RR32)
Give yourself a chocolate fix minus the calories and get silky soft skin with this creamy mask. Cocoa and Coconut Oil help to moisturize while Seaweed, Kaolin Clay, Aloe, Rosewater and Hyaluronic Acid help skin look and feel smooth, velvety soft and refreshed.
90 ml / 85 g / poids net wt 3 oz **\$14.50**



FUSION™ Berryfina Brightening Mask (RR33)
Reveal a brighter looking complexion and improve the appearance of dull, tired skin with Blueberry and Strawberry. Combined with soothing Calamine and deep-cleansing Illite clay, this helps to reveal a healthy glow.
90 ml / 90 g / poids net wt 3 oz **\$14.50**



FUSION™ Gift Set
Each set comes in a chic, reusable canvas and faux leather cosmetic bag. Includes: Face and Body Wash Travel Size, FUSION™ Face Moisturizer, and one of the Masks:
HP23 FUSION™ Chocofina Moisturizing Mask **\$34.50**
HP24 FUSION™ Matchafina Cleansing Mask **\$34.50**
HP25 FUSION™ Pumpkinfina Multivitamin Mask **\$34.50**
HP26 FUSION™ Berryfina Brightening Mask **\$34.50**

Hydra Medic® Collection for Oily, Problem Skin



- Hydra Medic® Face Wash (RR72)**
Hydra Medic® Face Wash is a deep cleansing formula with Willow Bark extract to gently exfoliate excess grime buildup, helping to prevent a greasy feel. Laminaria Digitata seaweed extracts and other botanicals help to prevent the appearance of dryness.
177 ml / 6 fl oz **\$17.50**
- Hydra Medic® Astringent (RR73)**
Hydra Medic® Astringent is the essential second step after cleansing to help balance the skin. Formulated with Salicylic Acid, Allantoin, and natural plant extracts such as Willow Bark, Green Tea, as well as Basil and Lavender, this helps skin feel clean and refreshed without drying.
177 ml / 6 fl oz **\$14.75**
- Hydra Medic® Mattifying Moisturizer (RR74)**
Hydra Medic® Mattifying Moisturizer is a non-greasy formula that combines Seaweed with Green, White and Rooibos Tea extracts to help reduce the appearance of shine while leaving skin with a soft, velvety-matte finish.
60 ml / 64 g / poids net wt 2.3 oz **\$19.50**

Hydra Medic® Collection for Oily, Problem Skin



- Hydra Medic® Beta Hydroxy Serum (RR75)**
Hydra Medic® Beta Hydroxy Serum is a blend of Alpha and Beta Hydroxy Acids which exfoliate to help reveal smoother, cleaner skin. Seaweed extracts, such as Laminaria Digitata and Ascophylum Nodosum, along with other botanicals, help to reduce the appearance of dryness for a more luminous looking complexion.
60 ml / 2 fl oz **\$16.50**
- Hydra Medic® Clear Complexion Drying Lotion (RR18)**
Apply on areas of concern and leave on overnight. Beta Hydroxy Acids and botanical extracts help to reduce the appearance of oily shine.
7.5 ml / .25 fl oz **\$13.50**
- Hydra Medic® Starter/Travel Collection (HMT)**
Take Hydra Medic® with you in convenient TSA-approved travel sizes, packed in a signature zip-top travel case. A correct way to get started on the road to clear skin. Includes: Hydra Medic® Face Wash, Astringent, Mattifying Moisturizer, Beta Hydroxy Serum, Drying Lotion and Sea Mud Mask.
travel **\$29.50**

- Hydra Medic® Sea Mud Perfecting Mask (RR17)**
This creamy sea mud mask deep cleanses and helps absorb excess oil, reducing the appearance of shine. Three different clays help to absorb oils while Seaweed and Allantoin help to leave the skin feeling refreshed.
120 ml / 131 g / poids net wt 4.6 oz **\$16.00**



Body Care Collection

Vita Cura® Triple Action Body Contour Cream (BC31)
See smooth, sexy skin. Repêchage Vita Cura® Body Contour Cream helps improve the appearance of tone and texture. Two select seaweeds with Chinese Herbs, Caffeine, and Coenzyme A help skin appear smoother. Infused with fragrant essential oils of Grapefruit, Basil and Mint.
227 ml / 227 g / poids net wt 8 oz **\$29.50**

Vita Cura® Triple Action Nutri Oil (BC30)
Veil the skin in luxury. This light and quickly absorbing body oil with Phyto Actives, veils the skin in a silky, satin finish while restoring moisture. Our Triple Action Nutri Oil helps to replenish moisture with a satin finish while it envelopes the senses in our light, natural Rooibos Tea and Vanilla aroma.
240 ml / 8 fl oz **\$27.50**

Sea Spa Glow (RR46)
Our best-selling body scrub! Based on mineral salts from the Dead Sea and infused with hydrating and moisture-binding Laminaria Digitata, Ulva Lactuca and Chondrus Crispus seaweed extracts. Combined with refreshing Mint and soothing Aloe. You will feel energized and refreshed, with smooth, silky, soft skin.
237 ml / 8 fl oz **\$17.50**

Hydra Soleil® Deep Relief Tea Gel (BC10)
This lightweight gel instantly cools and hydrates sun exposed skin. Thermus Thermophilus, Aloe, Cucumber, Laminara Digitata seaweed, and Green, White, Black, and Rooibos tea helps to provide après soleil relief. May be applied to face and body.
177 ml / 6 fl oz **\$19.50**



Perfect Skin
Mineral & Vitamin Rich Makeup



Perfect Skin Liquid Foundation
This liquid makeup features Seaweed extract as well as Aloe, Chamomile, and Orange Water extracts to soften and hydrate the skin. Available in ten shades and glides on super smooth while it helps to conceal imperfections and soften the appearance of flaws for a silky-smooth finish. Fragrance free.
30 ml / 1 fl oz **\$21.25**

- PS01
Neutral Cool Tone
- PS02
Cool Tone
- PS1
Warm Tone
- PS2
Warm Tone
- PS3
Cool Tone
- PS4
Neutral Tone
- PS5N
Golden
- PS10
Golden Deep
- PS12
Medium Deep
- PS14
Deep



Perfect Skin Natural Finish Pressed Powder
This featherweight, silky powder is non-comedogenic, glides on smooth and helps to reduce the appearance of shine. For extra cleanliness, the applicator is washable.
8.9 g / .3 oz **\$16.00**

- APP1
Light
- APP2
Beige
- APP3
Medium
- APP4
Dark



Perfect Skin Translucent Mineral-Rich Loose Powder (AT1)
A single shade suits all skin tones and provides a flawless complexion. This silky translucent powder provides a long lasting matte finish, won't clog pores and allows skin to breathe naturally.
17 g / .6 oz **\$15.00**

- AT1
Translucent



Perfect Skin Perfecting Concealer
Perfect, creamy rich camouflage in a convenient stick glides on and blends easily while it helps conceal countless imperfections. Can diminish the appearance of blemishes, dark under eye circles, and conceal spots. Flawless complexion in a stick!
2.0 g / .07 oz **\$15.00**

- AC2
Light
- AC3
Medium
- AC4
Dark



Perfect Skin Conditioning Lip Gloss
Our unique formula of Seaweed extracts, Cocoa Butter & Mafura Oil and Vitamin C and E imparts luscious, fashion forward color while helping to make lips feel softer and smoother. Comes in four gorgeous, wearable shades.
11 ml / .37 fl oz **\$13.75**

- AG21
Aura
- AG9
Rockstar
- AG20
Mantra
- AG15
Pink Champagne



POSTERS & BANNERS
MENUS, BROCHURES and CATALOGS



VITA CURA® POSTER
POST30 \$12.00



BIOLIGHT® POSTER
POST25 \$12.00



FOUR-LAYER
FACIAL® POSTER
POST9 \$12.00



NATURAL
BEAUTY POSTER
POST7 \$12.00



CONSUMER
BROCHURE
PO1 \$3.00



SEAWEED BODY
MASK POSTER
POST27 \$12.00



SEAWEED WAX POSTER
POST35 \$12.00

CLOTHING & ACCESSORIES



REPÊCHAGE®
SIGNATURE BACKPACK
MI26 \$39.00



REPÊCHAGE®
SIGNATURE TOTE
2BCBLU-00 \$15.00



VITA CURA® ROBE
(2 SIZES)
M166 ADULT \$45.00
M166 KIDS \$25.00



REPÊCHAGE®
FACIAL BAR CAPE
(ONE SIZE)
MI46 \$40.00



REPÊCHAGE® LAB COAT
M18 4 SIZE (4) \$75.00
M18 6 SIZE (6) \$75.00
M18 8 SIZE (8) \$75.00
M18 10 SIZE (10) \$75.00
M18 12 SIZE (12) \$75.00
M18 14 SIZE (14) \$75.00
M18 16 SIZE (16) \$75.00
M18 18 SIZE (18) \$75.00
M18 20 SIZE (20) \$75.00
M18 22 SIZE (22) \$75.00

SHOPPING BAGS



LARGE FABRIC
SHOPPING BAGS
MI23 \$5.00



REPÊCHAGE® TISSUE PAPER
MI4 480 \$60.00



BOUTIQUE SHOPPING BAGS
MI23B 50 \$50.00

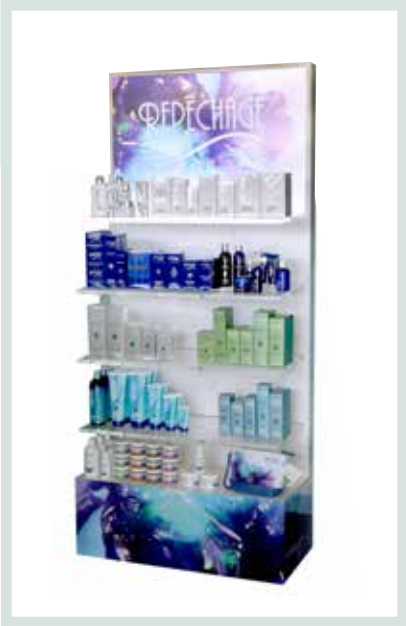


REPÊCHAGE® SIGNATURE
GIFT BASKET
MI63 Basket \$15.00



DISPLAYS

REPÊCHAGE®
LIGHTED
RETAIL DISPLAY
LS11D \$1,250.00



The Lydia Sarfati Facial Bar Chair

- This beautiful, fully reclining chair makes treatments at the facial bar fast, effective and effortless!
- Available in adult and children's sizes

Adult: **\$900.00**
Child: **\$700.00**



REPÊCHAGE® PERFECT SKIN LIQUID
FOUNDATION COUNTER DISPLAY
COMING SOON



REPÊCHAGE® LIP GLOSS
COUNTER DISPLAY
COMING SOON

ACCESSORIES



COTTON SQUARES
MI15 100 Count **\$15.00**

MASK APPLICATION BRUSH
BB5 Brush **\$10.00**



SILVER BALL MASSAGER
SU73 Massager
\$79.50



MOIST COTTON TOWELS
MI 3A 50 pack **\$27.50**



MYLAR SHEETS
SU30 10 sheets **\$42.00**
MYLAR SHEETS FOR TARGETED AREA
SU32(small) 12 sheets **\$29.50**



MEDICAL GRADE RUBBER
MIXING BOWL
SU4 Bowl **\$16.00**



SKIN ANALYSIS CHARTS
MI 1 100 **\$25.00**

BOOKS

SUCCESS AT YOUR FINGERTIPS
BY LYDIA SARFATI
The secrets of success from one of the most knowledgeable women in the spa and salon industry. With over 30 years of experience in skin care and a reputation as a pioneer in the field of esthetics in the US, Sarfati imparts her know-how on how to make it in one of the hottest industries today.

MI49 **\$29.95**

"These are the 'golden rules' of the spa and skin care business".
— Joel Gerson, PhD, Author

REPÊCHAGE®: THE BOOK-SKINCARE SCIENCE & PROTOCOLS
This new edition provides in-depth treatment protocols on all Repêchage® skin care and body care treatments, along with scientific explanations on the functions of the skin and muscles. Topics include structure of the skin, skin classifications, skin disorders, cellulite, body treatments, facial massage techniques, facial room set-up, why seaweed and thalassotherapy.

PM145 **\$69.00**

"When you finish this book, you will know clearly what you need to do in order to achieve your own success".
— Cheryl Tricoci, Co-Founder of Mario Tricoci Hair Salon and Day Spa



- ONGOING
EDUCATIONAL
OPPORTUNITIES
- Webinars – Digital Learning
 - In-House Academy
 - Instructional Videos
 - Educational Books
 - Repêchage®: The Book-Skincare Science & Protocols
 - Success At Your Fingertips
 - www.learningwithlydia.com



*Please note prices are subject to change without any notification.